



Montezuma-Cortez
High School



Board Meeting

October 8, 2013

COMMUNITY INPUT

Public Meetings:

- School Board
- Tribal Council
- Open House
- Incoming Freshmen
- Will continue throughout design



DAT Meetings:

- 11 full group meetings to date
- Will continue throughout design



User Group Meetings:

- Over 35 meetings conducted



Staff and Student Survey

Please describe any other issues related to the classroom layout that are important to you.

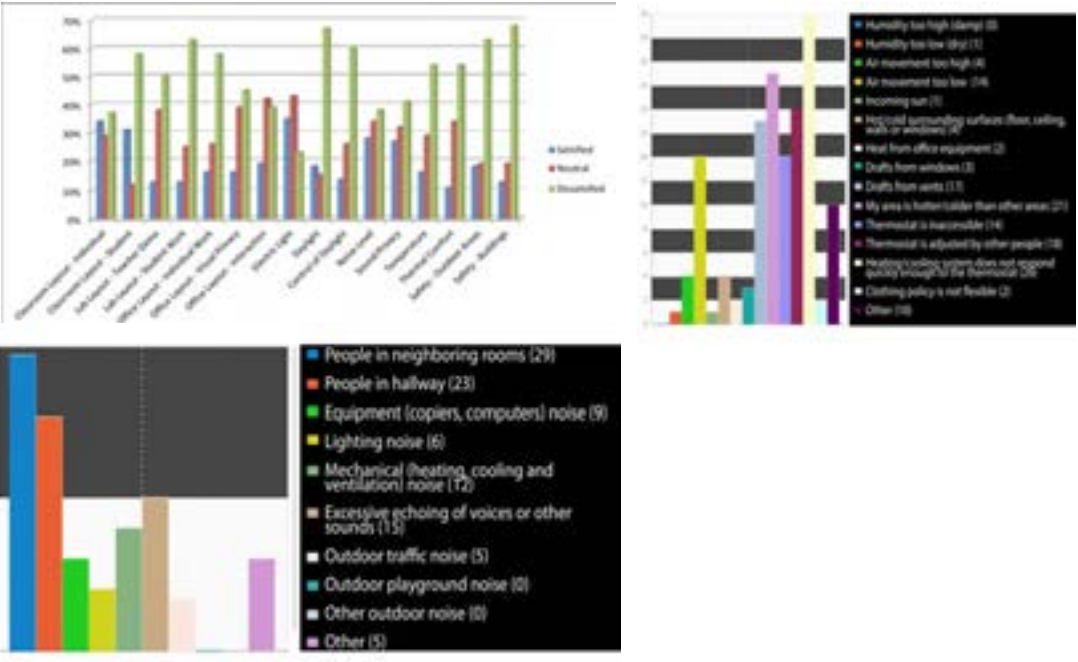
* You have said that you are dissatisfied with the amount or type of space available for your individual work and storage in the classrooms. Which of the following contribute to your dissatisfaction?
Check any that apply

- Amount of work surface area
- Available filing and storage space
- Available space for personal items
- Other:

* You have said that you are dissatisfied with the amount or type of space available for student work and storage in the classrooms. Which of the following contribute to your dissatisfaction?
Check any that apply

- Available desk or table space
- Available storage space
- Available space for personal items
- Space for meeting in small groups
- Flexibility of space for different activities
- Available space for displaying student work
- Other:

Staff and Student Survey



Project Website: <http://www.dpsdesign.org/mchs>



- News:**
- [Cortez Journal Coverage 8/5/13](#)
 - [Cortez Journal Coverage 5/13/13](#)
 - [Cortez Journal Coverage 2/22/13](#)

Project update 08.15.13

Work is well underway on the Design Development phase, which focuses on further developing building materials and systems, integrating structural and interior design with the architectural work, and reconciling need with the available budget. DAT meetings were held on July 16th to review initial concepts for the interior design and landscape design, and on August 6th, to review initial concepts exterior design of the school. The design team also met with the Ute Mountain Ute Tribal Council on August 13th to present a project update and solicit feedback. The next DAT meeting is scheduled for Sept 10th.



Conceptual Site Plan for the new MCHS (click picture to see full resolution)

- Downloads:**
- [Schematic Design Submittal](#)
 - [Summary of Online Survey Results](#)
 - [8/13/2013 DAT Meeting](#)
 - [8/13/2013 Public Meeting](#)
 - [5/21/2013 Programming Submittal](#)
 - [5/21/2013 DAT Meeting](#)
 - [5/21/2013 DAT Meeting](#)
 - [Summary of HS Tour](#)
 - [8/18/2013 DAT Programming Meeting](#)
 - [3/19/2013 DAT Programming Meeting](#)
 - [Draft Owner's Project Requirements \(OPR\)](#)
 - [3/5/2013 DAT Kickoff Meeting](#)

Some of the documents created to date, including the Schematic Design Submittal, High School Tour Report, and various meeting presentations are available to the left in the download section. Meeting minutes are posted below. Please check back here periodically to stay in the loop as we add more information.



BUILDING PLANS





DESIGN

Exterior Design Principles/Goals

- Welcoming environment that fits location
- Capitalize on views
- Energy efficient, durable and maintainable
- Reflect all local cultures, reflect local colors and materials
- Safe and secure without becoming a “compound”
- Obvious entry
- Break down scale of large building
- Be self-shading or provide shade



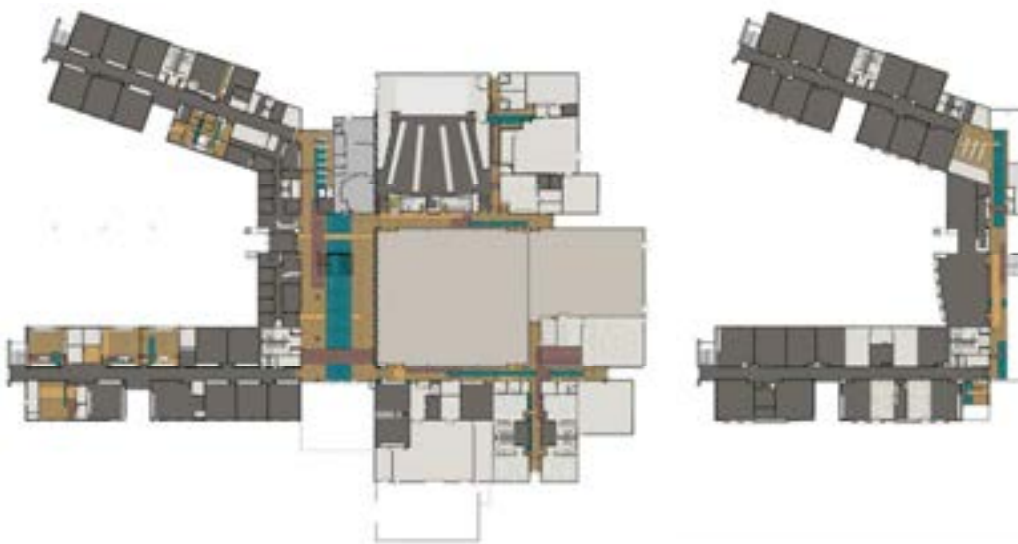


Interior Design Principles/Goals

- Select materials that are durable, long-lasting, easy to maintain
- Select colors and finishes that reflect nature, the surrounding landscape, local cultures
- Reduce negative environmental impact by selecting materials that are low-VOC and either contain recycled material or can be recycled
- Design spaces that feel defined yet provide flexibility

INTERIOR FINISHES

Option A



First Floor

Second Floor

Floor Design Options

Option B



First Floor



Second Floor

Floor Design Options

Option C



First Floor



Second Floor

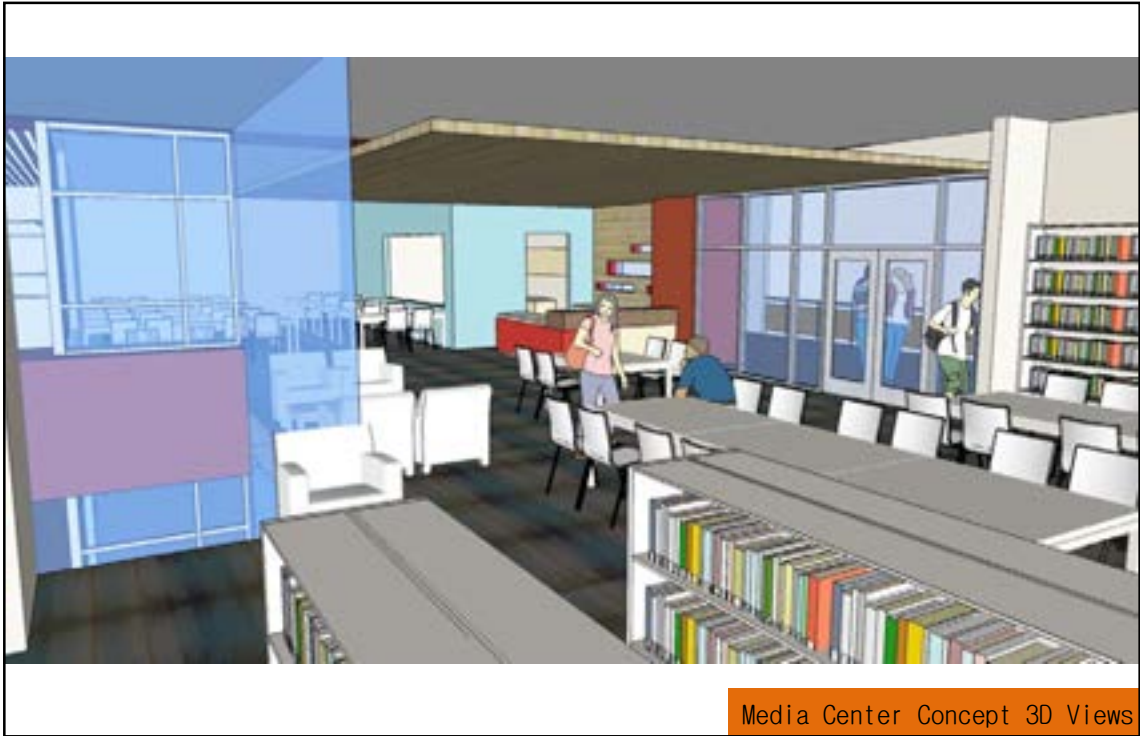
Floor Design Options



Furniture Layouts



Media Center Concept 3D Views



Media Center Concept 3D Views

SUSTAINABILITY

Energy & Water Conservation:

- Wall and roof insulation
- Windows and shading
- Ground-coupled heat pump
- Efficient lighting and controls
- 40% indoor water savings
- Low water use planting

Healthy Environment:

- Daylight and Views
- Low-VOC materials
- Thermal Comfort

Material Conservation:

- Recycled, Regional, CWM

GREEN STRATEGIES

Category	Points	Possible Points
Sustainable Sites	24	24
Water Efficiency	11	11
Energy and Atmosphere	31	31
Materials and Resources	13	13
Indoor Environmental Quality	18	18
Innovation and Design Process	6	6
Regional Priority Credits	4	4
Total	58	70

LEED SCORECARD

NEXT STEPS

